

Christmas Snowman Music Player DIY Kit

1.Introduction:

It is designed into ten different Christmas snowman cute cartoon characters, each Christmas snowman middle character is combined into "CHRISTMAS!", and there is a full color LED behind, with 14 full color LED gradient modes, each LED The effect is matched with a different Christmas song, with a total of 14 Christmas songs built in, so that the effect of the combination of sound and color can increase the Christmas day atmosphere.

2.Feature:

- 1>.10 different Christmas snowman shapes
- 2>.14 different Christmas music
- 3>.14 kinds RGB backlight LED full color flashing effect
- 4>.Automatically switch LED flashing status by re-start power switch
- 5>.Automatically switch Christmas music by re-start power switch
- 6>.ON/OFF Christmas music playing
- 7>.5mm RGB LED high brightness
- 8>."CHRISTMAS!" character display
- 9>.DIP components design and easy for beginner
- 10>.Mini USB power supply method

3.Parameter:

- 1>.Work Voltage:DC 5V
- 2>.Work Temperature:-40℃~85℃
- 3>.Work Humidity:5%~95%RH
- 4>.Size(Installed):200*40*13mm

4.Music:

- 1>.We wish you a merry Christmas
- 2>.Santa Claus Is Coming To Town
- 3>.Silent Night
- 4>.When a child is born
- 5>.Christmas blessing song
- 6>.O Christmas Tree
- 7>.I saw three ships
- 8>.It Came Upon A Midnight Clear
- 9>.White Christmas
- 10>.Joy To The World
- 11>.Merry Christmas
- 12>.Christmas Day
- 13>.Rudolph the red-nosed reindeer
- 14>.Jingle Bells

5.Use Methods:

- 1>.Connect to the 5V power supply by Mini USB cable.
- 2>.Turn ON/OFF the middle Toggle Switch can turn ON/OFF work power and switch next LED Flashing Status.
- 3>.Turn ON/OFF the right Toggle Switch can turn ON/OFF music and switch next music.

6.Component Listing:

- 1>.4pcs 100ohm Metal Film Resistor
- 2>.1pcs DIP-16 STC8G1K17 IC Controller
- 3>.1pcs TO-92 S9012 Transistor
- 4>.1pcs Mini USB Socket
- 5>.1pcs Active Buzzer
- 6>.2pcs Toggle Switch
- 7>.10pcs 4pin 5mm RGB LED
- 8>.1pcs 80cm USB Power Wire
- 9>.1pcs 200*40mm PCB

7.Application:

- 1>.Christmas decorations Training welding skills
- 2>.Training welding skills
- 3>.Student school
- 4>.Project Design
- 5>.Electronic competition
- 6>.Gift giving
- 7>.Crafts collection
- 8>.Home decoration
- 9>.Souvenir collection
- 10>.Graduation design
- 11>.Holiday gifts

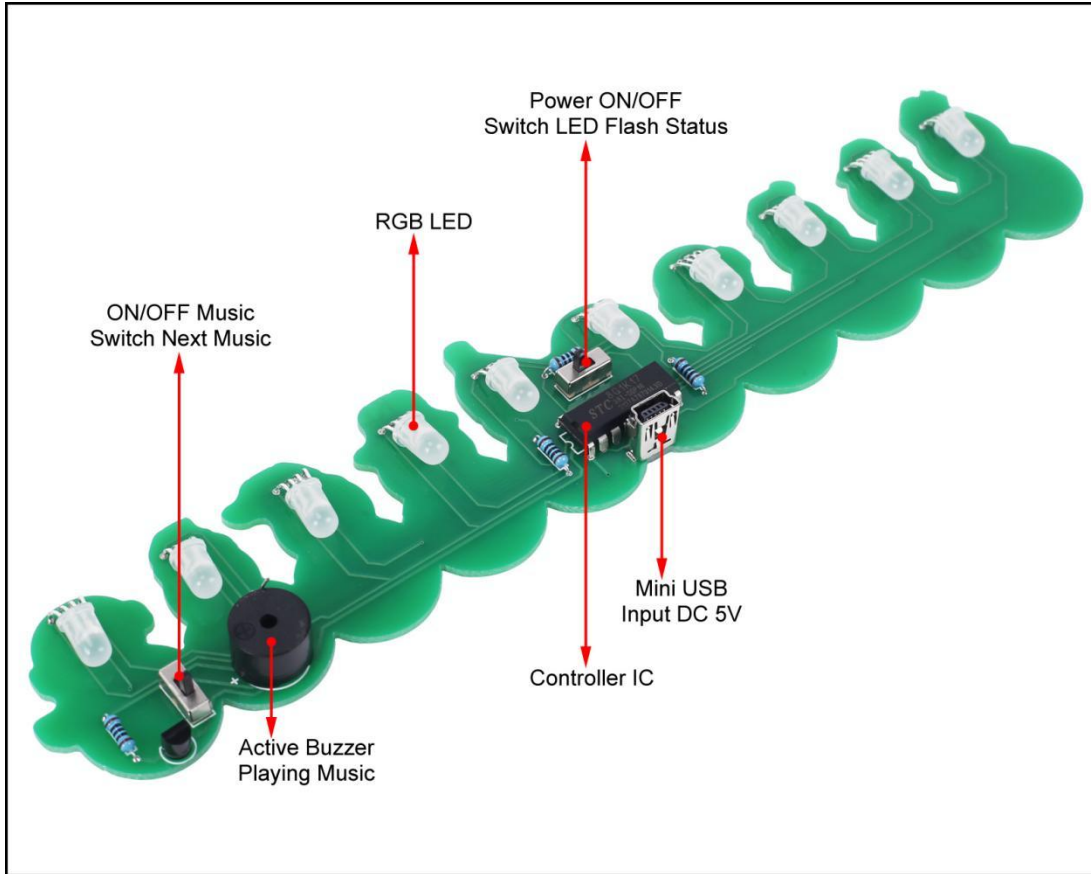
8.Installation Tips:

- 1>.User needs to prepare the welding tool at first.
 - 1.1>.Soldering iron (<50 Watt)
 - 1.2>.Rosin core ("radio") solder
 - 1.3>.Wire cutters
 - 1.4>.Wire strippers
 - 1.5>.Screwdriver
- 2>.Please be patient until the installation is complete.
- 3>.The package is DIY kit.It need finish install by user.
- 4>.The soldering iron can't touch the components for a long time(1.0 second), otherwise it will damage the components.
- 5>.Pay attention to the positive and negative of the components.
- 6>.Strictly prohibit short circuit.
- 7>.User must install the LED according to the specified rules.Otherwise some LED will not light.
- 8>.Install complex components preferentially.
- 9>.Make sure all components are in right direction and right place.
- 10>.It is strongly recommended to read the installation manual before starting installation!!!
- 11>.Please wear anti-static gloves or anti-static wristbands when installing electronic components.

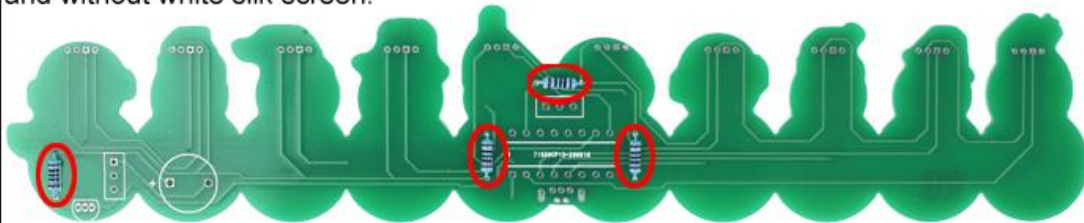
9.Installation Steps(Please be patient install!!!):

- 1>.Step 1: Install 4pcs 100ohm Metal Film Resistor on PCB back side which all in green and without white silk screen.
- 2>.Step 2: Install 1pcs DIP-16 STC8G1K17 IC Controller.There is a dot mark on one end of the IC and there is a gap mark on PCB silk screen where the IC can place on.These two marks are corresponding to each other and are used to specify the installation direction of the IC.
- 3>.Step 3: Install 1pcs Active Buzzer. Note: Label ' + ' connect to the square pad.
- 4>.Step 4: Install 2pcs Toggle Switch.
- 5>.Step 5: Install 1pcs TO-92 S9012 Transistor. Pay attention to the installation direction. The arc on the PCB corresponds to the arc on S9012.
- 6>.Step 6: Install 4pin 5mm RGB LED. Note: The longest pin connect to the square pad. Pay attention to keeping a distance of 5mm and then bend the LED as shown.
- 7>.Step 7: Install the remaining 4pin 5mm RGB LED by the same method.
- 8>.Step 8: Install 1pcs Mini USB Socket.

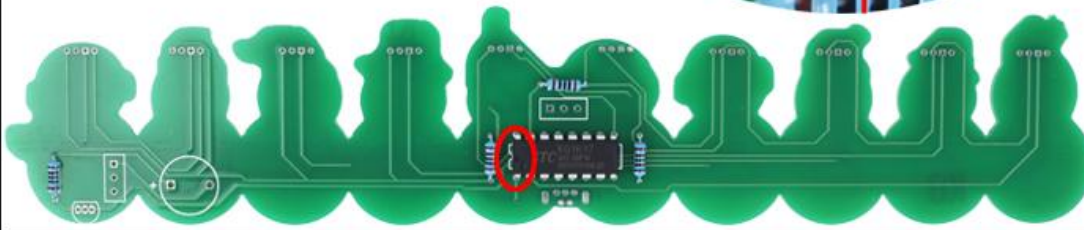
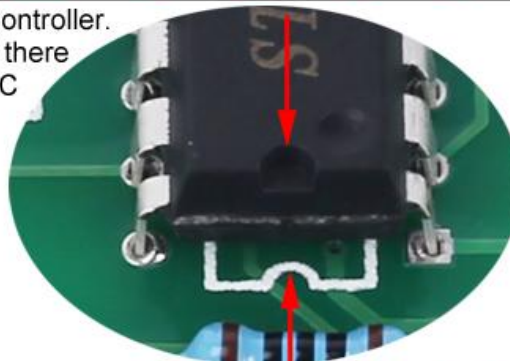
10.Install shown steps:



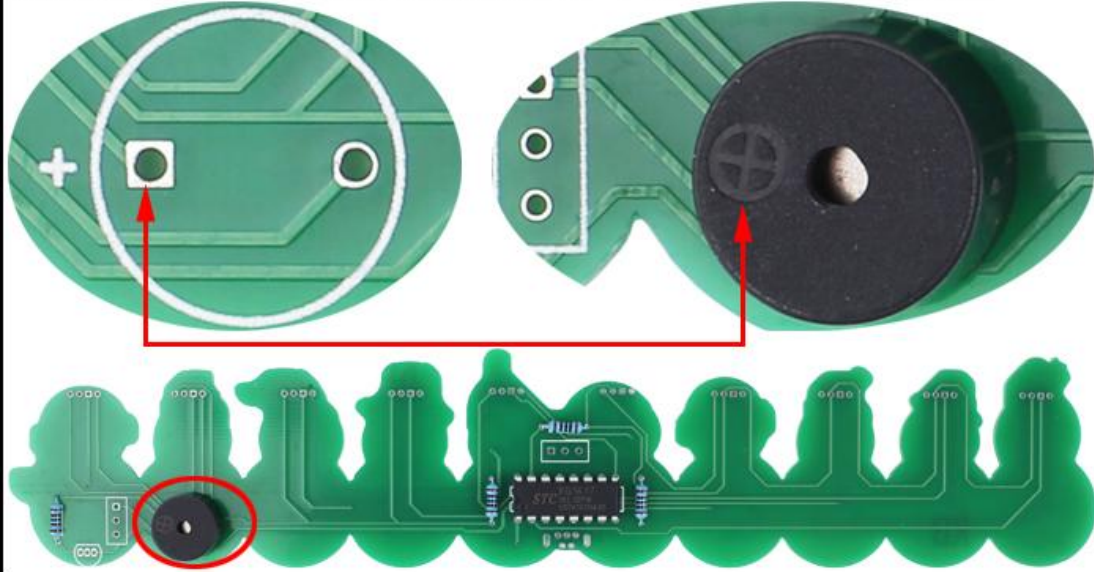
Step 1: Install 4pcs 100ohm Metal Film Resistor on PCB back side which all in green and without white silk screen.



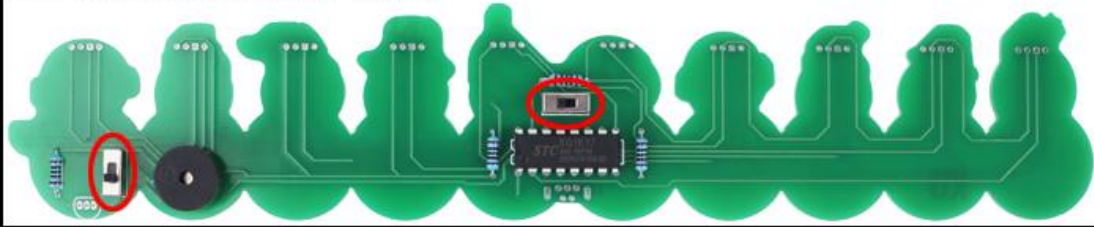
Step 2: Install 1pcs DIP-16 STC8G1K17 IC Controller. There is a dot mark on one end of the IC and there is a gap mark on PCB silk screen where the IC can place on. These two marks are corresponding to each other and are used to specify the installation direction of the IC.



Step 3: Install 1pcs Active Buzzer. Note: Label '+' connect to the square pad.



Step 4: Install 2pcs Toggle Switch.



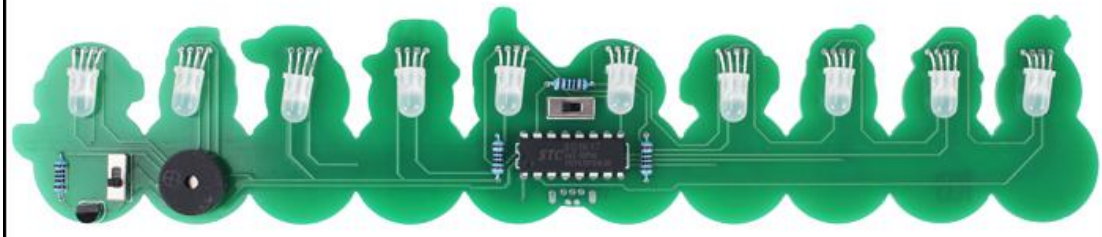
Step 5: Install 1pcs TO-92 S9012 Transistor. Pay attention to the direction. The arc on the PCB corresponds to the arc on S9012.



Step 6: Install 4pin 5mm RGB LED. Note: The longest pin connect to the square pad. Pay attention to keeping a distance of 5mm and then bend the LED as shown.



Step 7: Install the remaining 4pin 5mm RGB LED by the same method.



Step 8: Install 1pcs Mini USB Socket.

