

Game DIY Kit

1.Introduction:

It is a DIY game console that users can install it by themselves to play games. It contains 5 games: Tetris/Snake/Plane/Racing/Fruit Slot. Users can not only learn circuits and practice welding skills, but also enjoy the fun of the game.

2.Feature:

- 1>.Built-in 5 classic games
- 2>.Built-in game background music
- 3>.Adjustable display backlight
- 4>.Real-time game scores
- 5>.Power-off memory function

3.Parameter:

- 1>.Work Voltage:DC 4.5V~5.5V
- 2>.Work Current:100mA
- 3>.Work Temperature:-40℃~85℃
- 4>.Work Humidity:0%~95%RH
- 5>.Size(Installed):109*80*23mm

4.Component listing:

NO.	Component Name	PCB Marker	Parameter	QTY
1	Passive Buzzer	B1	5V 12mm	1
2	Electrolytic Capacitor	C2	220uF 16V	1
3	Micro USB Female Socket	J1		1
4	Self-locking Switch	S1	White	1
5	Black Button	S2-S8	12*12mm	6
6	Red LED		3mm	128
7	3Bit Digital Tube	SEG1	Red	1
8	IC Socket	U1	DIP-40	1
9	STC15W408S Controller	U1	DIP-40	1
10	USB Cable		50cm	1
11	PCB		98*70*1.6mm	1
12	Red Button Cap	S1	Red	1
13	Yellow Button Cap	S2-S8	Yellow	6
14	Acrylic Shell			6
15	M3 Copper Pillar		M3*8mm	4
16	M3 Copper Pillar		M3*6+6mm	4

17	M3 Screw		M3*6mm	8
Note:Users can complete the installation according to the PCB silk screen and component list.				

5.Application:

- 1>.Training welding skills
- 2>.Student school
- 3>.DIY production
- 4>.Project Design
- 5>.Electronic competition
- 6>.Gift giving
- 7>.Crafts collection
- 8>.Home decoration
- 9>.Souvenir collection

6.Installation Tips:

- 1>.User needs to prepare the welding tool at first.
- 2>.Please be patient until the installation is complete.
- 3>.The package is DIY kit.It need finish install by user.
- 4>.The soldering iron can't touch the components for a long time(1.0 second), otherwise it will damage the components.
- 5>.Pay attention to the positive and negative of the components.
- 6>.Strictly prohibit short circuit.
- 7>.Users can complete installation by PCB silk screen and component listing.
- 8>.User must install the LED according to the specified rules.Otherwise some LED will not light.
- 9>.Install complex components preferentially.
- 10>.Make sure all components are in right direction and right place.
- 11>.It is strongly recommended to read the installation manual before starting installation.

7.Installation Steps:

- Step 1: Install 40pcs 3mm Red LED.Pay attention to the positive and negative of the components.The longer pin is positive pin.Make sure each LED is not tilted.
- Step 2: Install 1pcs Micro USB Female Socket.
- Step 3: Install 1pcs 5V 12mm Passive Buzzer.Pay attention to the positive and negative pole and there is a mark on buzzer.
- Step 4: Install 1pcs DIP-40 IC Socket.Pay attention to the installation direction.
- Step 5: Install 6pcs 12*12mm Black Button.
- Step 6: Install 1pcs 3Bit Red Digital Tube.
- Step 7: Install 1pcs 220uF 16V Electrolytic Capacitor.Pay attention to the positive and negative of the components.The longer pin is positive pin.
- Step 8: Install 1pcs Self-locking Switch.Pay attention to the installation direction.
- Step 9: Install 1pcs DIP-40 STC15W408S Controller on IC Socket.Pay attention to

the installation direction.

Step 10: Install 1pcs Red and 6pcs Yellow Button Cap.

Step 11: Install copper posts.

Step 12: Remove the protective film from the acrylic surface.

Step 13: Install the acrylic case.

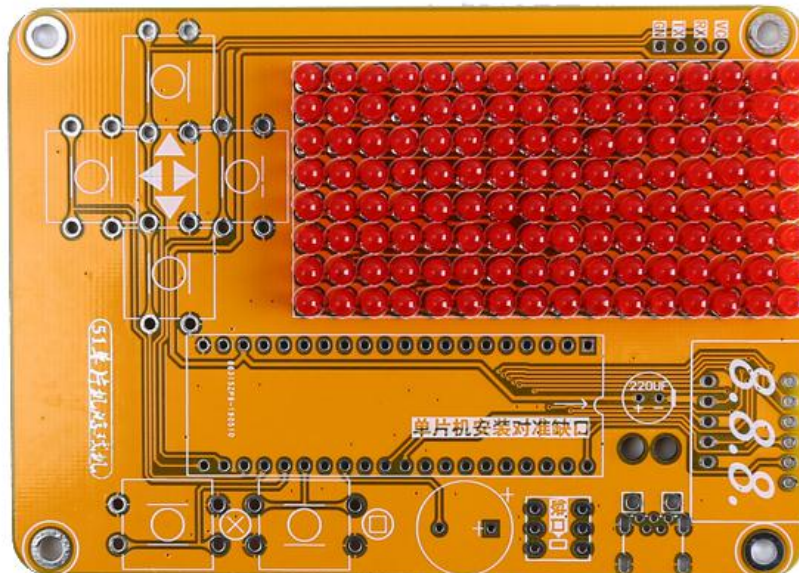
Step 14: Input work voltage from micro USB and test and Application.

8.Install shown steps:

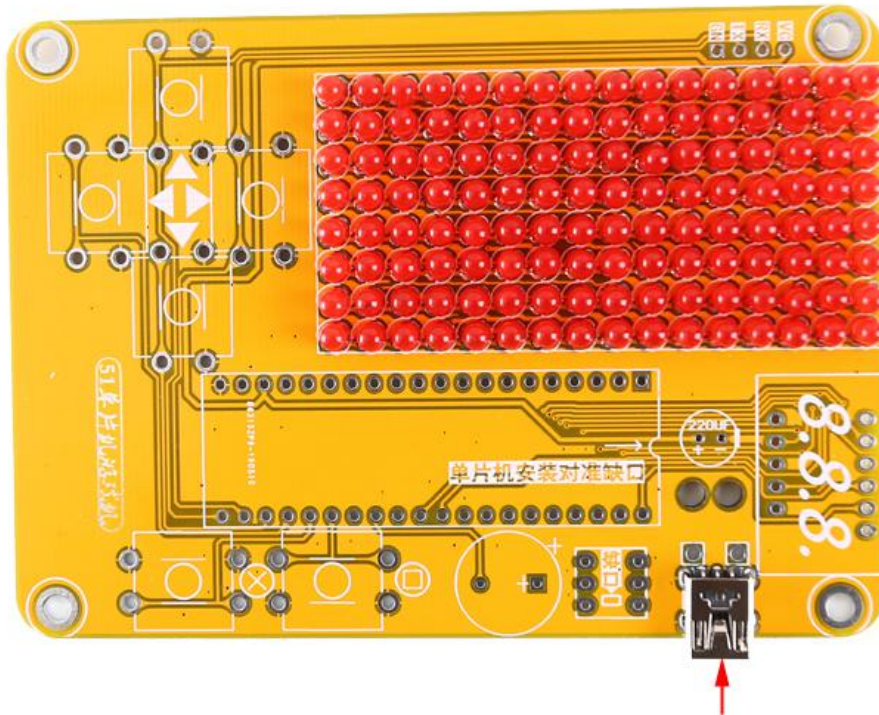
Step 1: Install 128pcs 3mm Red LED.Pay attention to the positive and negative of the components.

The longer pin is positive pin.

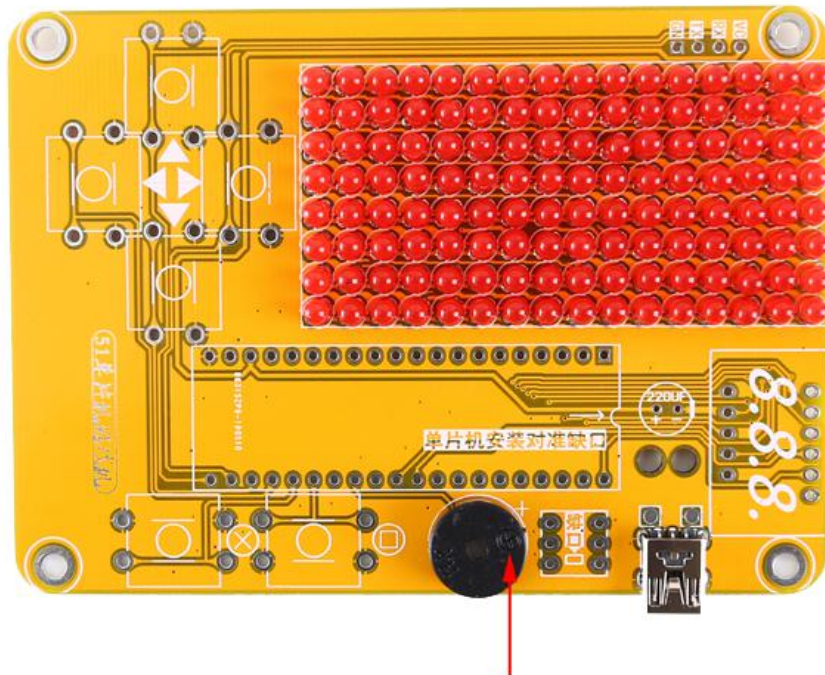
Make sure each LED is not tilted.



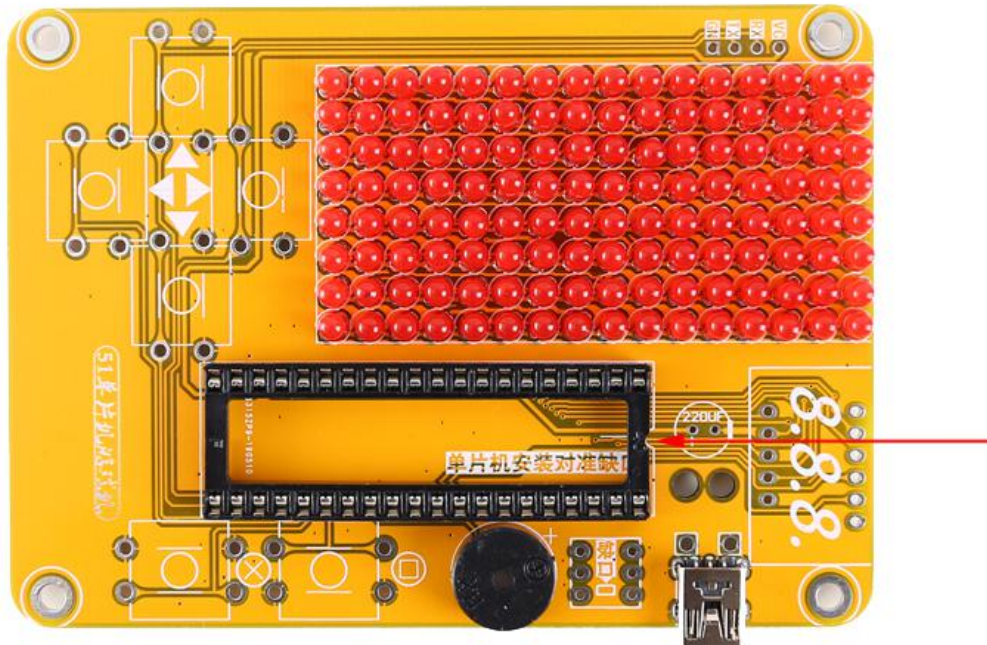
Step 2: Install 1pcs Micro USB Female Socket.



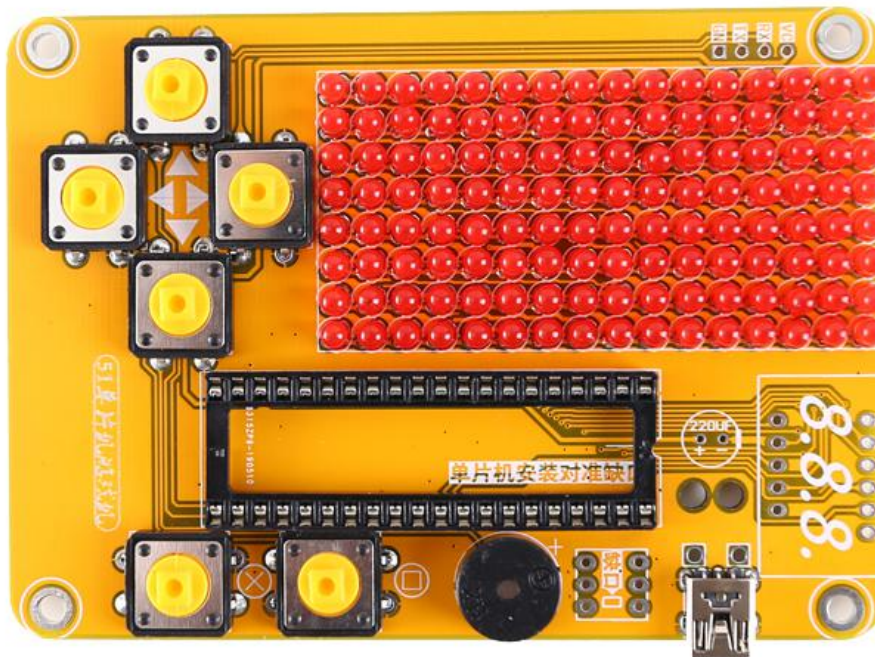
Step 3: Install 1pcs 5V 12mm Passive Buzzer. Pay attention to the positive and negative pole and there is a mark on buzzer.



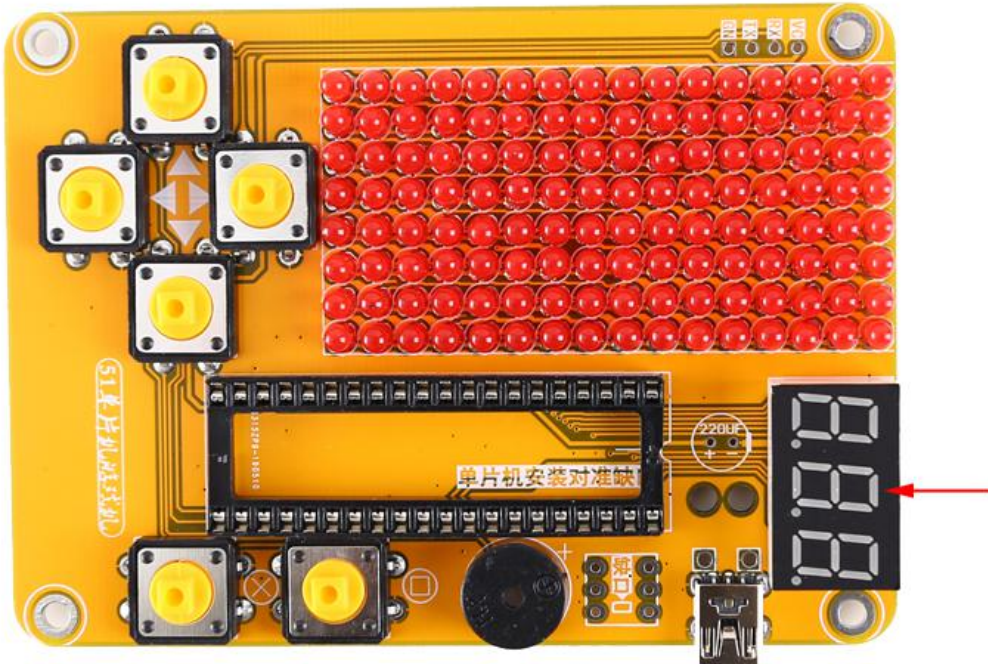
Step 4: Install 1pcs DIP-40 IC Socket.
Pay attention to the installation direction.



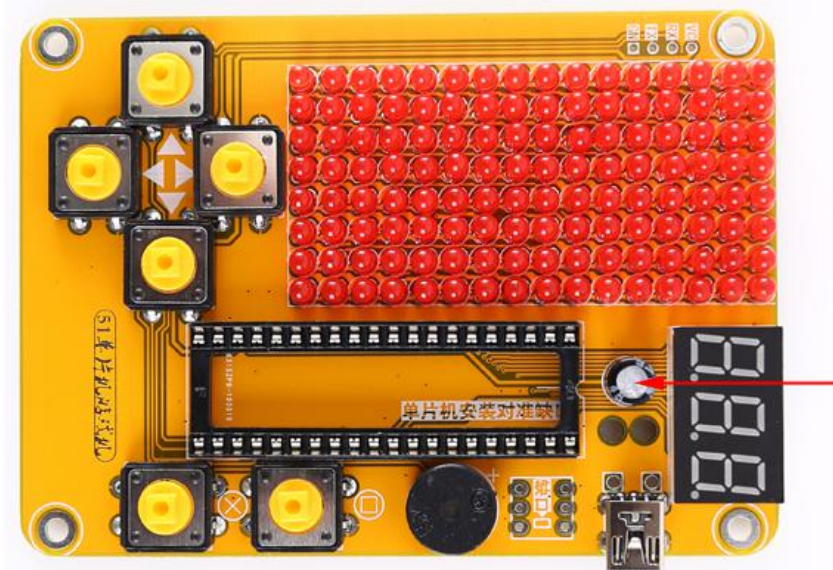
Step 5: Install 6pcs 12*12mm Black Button.



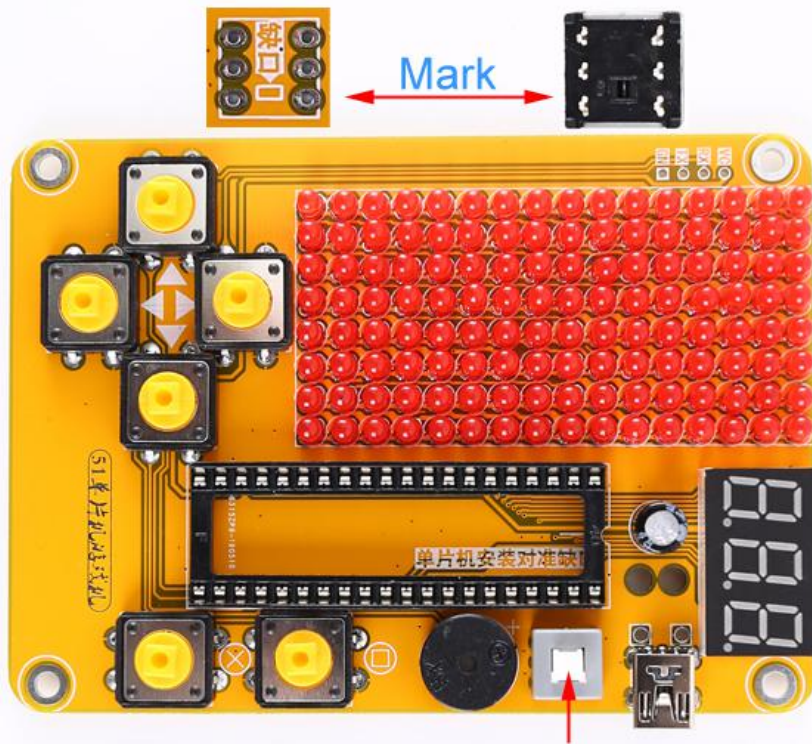
Step 6: Install 1pcs 3Bit Red Digital Tube.



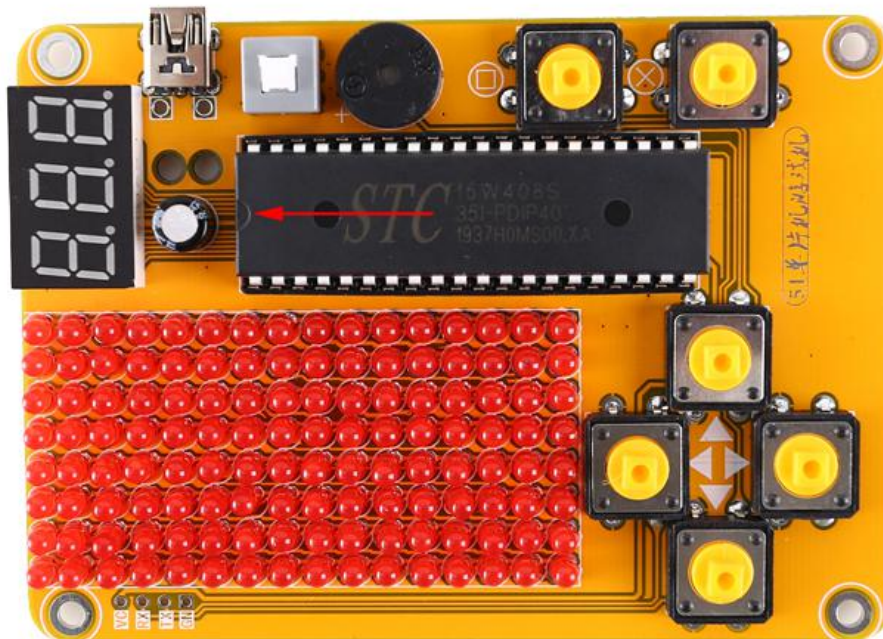
Step 7: Install 1pcs 220uF 16V Electrolytic Capacitor. Pay attention to the positive and negative of the components. The longer pin is positive pin.



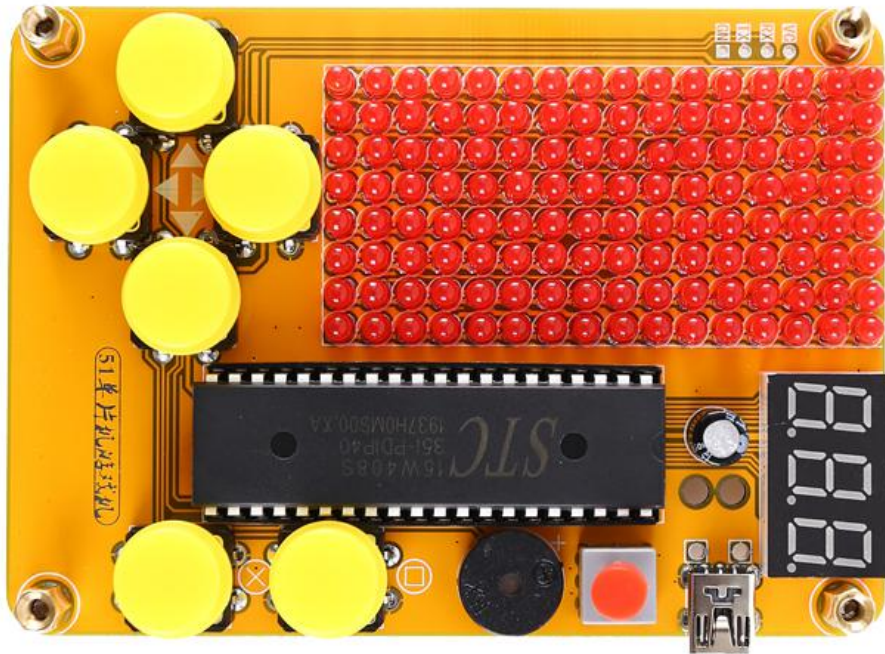
Step 8: Install 1pcs Self-locking Switch.
Pay attention to the installation direction.



Step 9 Install 1pcs DIP-40 STC15W408S Controller
on IC Socket. Pay attention to the installation direction.



Step 10: Install 1pcs Red and 6pcs Yellow Button Cap.
Step 11: Install copper posts.



Step 12: Remove the protective film from the acrylic surface.



Step 13: Install the acrylic case.
Step 14: Input work voltage from micro USB
and test and Application.

