
Pentagram RGB LED Music Controller DIY Kit

1.Introduction:

This is a RGB LED pentagram DIY kit that you need to weld and assemble by yourself. The bottom plate comprises a circuit board and component parts. A variety of cool model showing a three-dimensional effect. It's better to watch in the night.

2.Parameter:

- 1>.Work Voltage:DC 3.5V-5.5V
- 2>.Work Current:100mA
- 3>.Power Type:MINI USB
- 4>.Control Type:Button Control
- 5>.Music Type:Pure Music
- 6>.Music: 11kinds(Can not be modified)
- 7>.Work Temperature:-40℃~85℃
- 8>.Work Humidity:0%~95%RH
- 9>.Size(Installed):

3.Function:

- 1>.RGB LED light color changes automatically
- 2>.Automatic music playback
- 3>.11kinds pure music
- 4>.Switch memory function
- 5>.Music switch control
- 6>.MINI USB provide power supply
- 7>.Perfect simple circuit

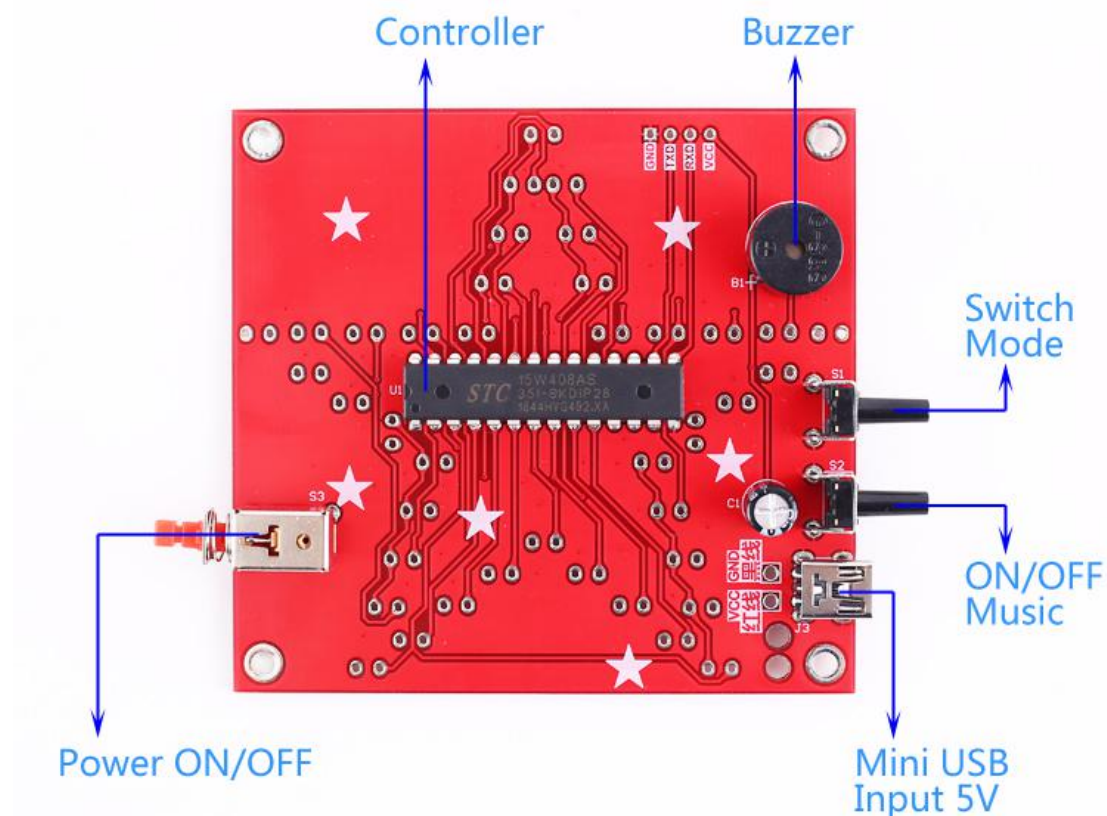
4.Component listing:

NO.	Component Name	PCB Marker	Parameter	QTY
1	Electrolytic Capacitor	C1	16V 22uF	1
2	STC15W408AS	U1	DIP-28	1
3	IC Socket	U1	DIP-28	1
4	MINI USB Female Socket	J3		1
5	Tact Switch	S1,S2	Black	2
6	Self-Locking Switch	S3	Red	1
7	Passive Buzzer	B1	5V 12mm	1
8	RGB LED		5mm	40
9	USB Cable			1
10	Acrylic Shell			6
11	Copper Column		M3*12mm	4
12	Copper Column		M3*5+6mm	4

13	Screw		M3*4mm	8
14	PCB		80*75*1.6mm	1

Note: Users can complete the installation according to the PCB silk screen and component list.

5.Basic instruction:



6.Application:

- 1>.Training welding skills
- 2>.Student school
- 3>.DIY production
- 4>.Project Design
- 5>.Electronic competition
- 6>.Gift giving
- 7>.Crafts collection
- 8>.Home decoration
- 9>.Souvenir collection

7.Installation Notes

- 1>.User needs to prepare the welding tool at first.
- 2>.This DIY installation is more difficult to be installed, please be patient until the installation is complete.

-
- 3>.The package is DIY kit.It need finish install by user.
 - 4>.The soldering iron can't touch the components for a long time(1.0 second), otherwise it will damage the components.
 - 5>.Pay attention to the positive and negative of the components.
 - 6>.Users can complete installation by PCB silk screen and component listing.
 - 7>.User must install the LED according to the specified rules.Otherwise some LED will not light.
 - 8>.Install complex components preferentially.
 - 9>.Make sure all components are in right direction and right place.
 - 10>.It is strongly recommended to read the installation manual before starting installation.

8.Installation Steps(Please be patient install! !)

Step 1: Install 1pcs Mini USB socket at J3.Note: All LED are mounted on the same side of the PCB and all other components are installed on the other side, please do not install the error.

Step 2: Install 1pcs 16V 22uF Electrolytic Capacitor at C1.Note:Long pin is the positive pole.

Step 3: Install 2pcs black button at S1 and S2.

Step 4: Install 1pcs Passive Buzzer at B1.Pay attention to distinguish between positive and negative.There is a mark + on buzzer means the corresponding pin is positive pole.

Step 5: Install 1pcs red button at S3.

Step 6: Install 1pcs DIP-28 IC Socket and 1pcs DIP-28 STC15W408AS at U1.Must not be installed reverse, otherwise it will not work properly. User can also not install IC Socket.

Step 7: Install 5mm RGB LED on the other side of PCB.Pay attention to distinguish between positive and negative.

Step 8: Install the acrylic case.User can also not install.Tear off the protective film on the acrylic surface.

Step 9: Mounting screws and copper posts.

Step 10: Fixed base acrylic.

Step 11: Place the surrounding acrylic.

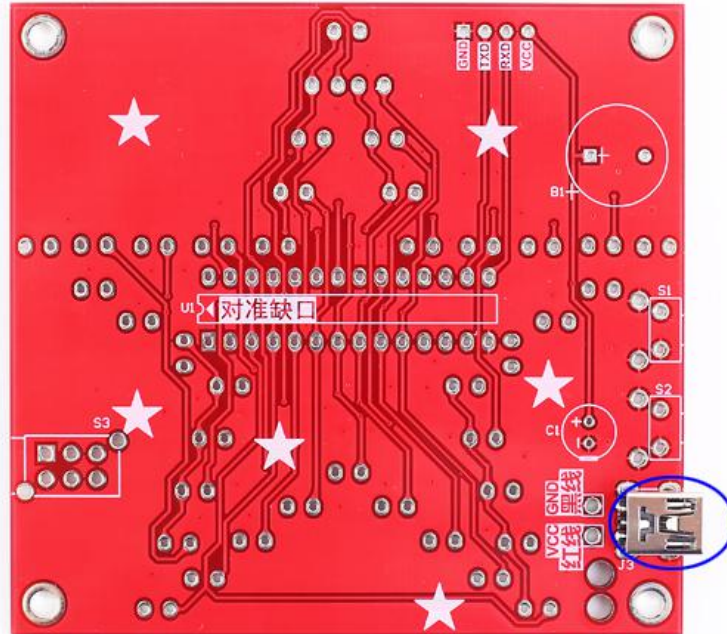
Step 12: Fixed upper acrylic.

Step 13: Turn on the power and enjoy the effect.

12.Install shown steps:

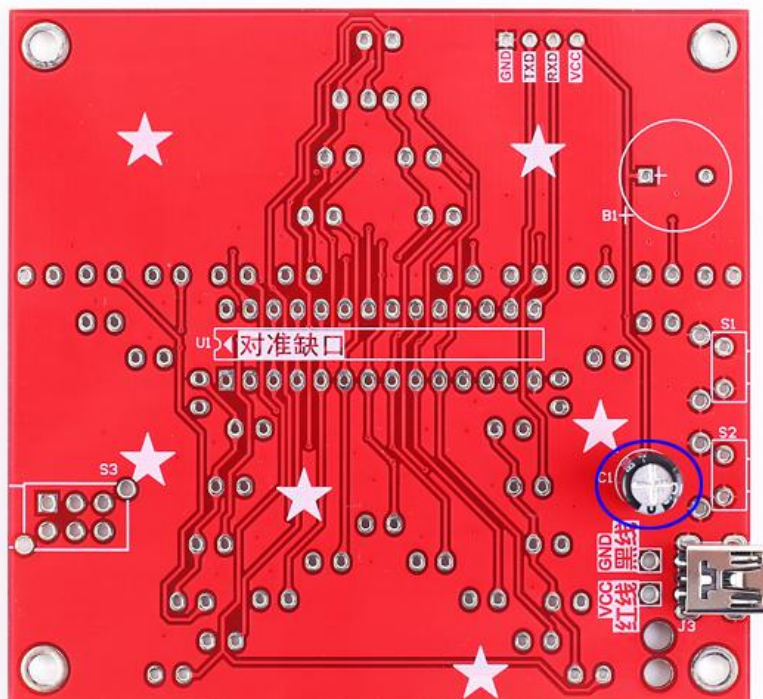
Step 1: Install 1pcs Mini USB socket at J3.

Note: All LED are mounted on the same side of the PCB and all other components are installed on the other side, please do not install the error.

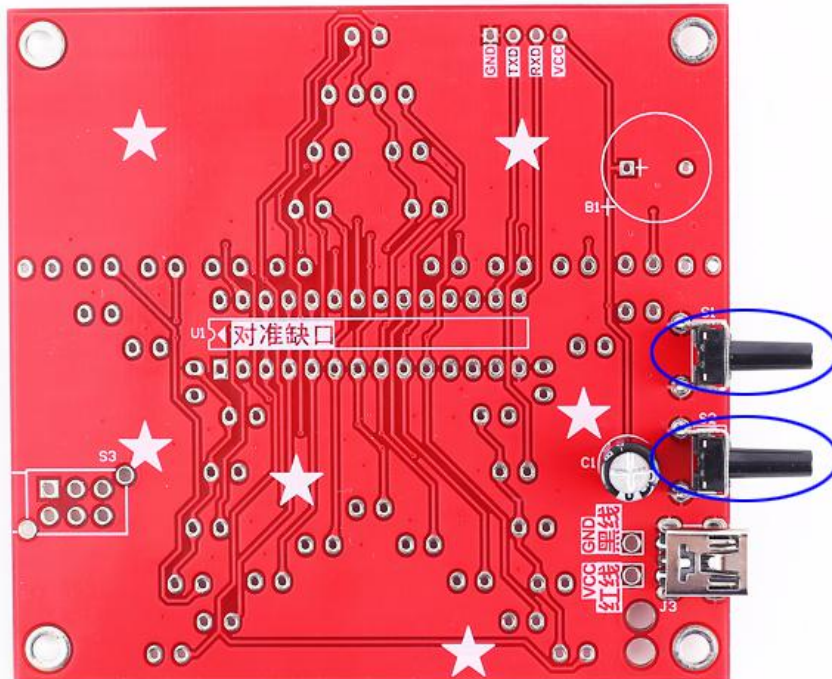


Step 2: Install 1pcs 16V 22uF Electrolytic Capacitor at C1.

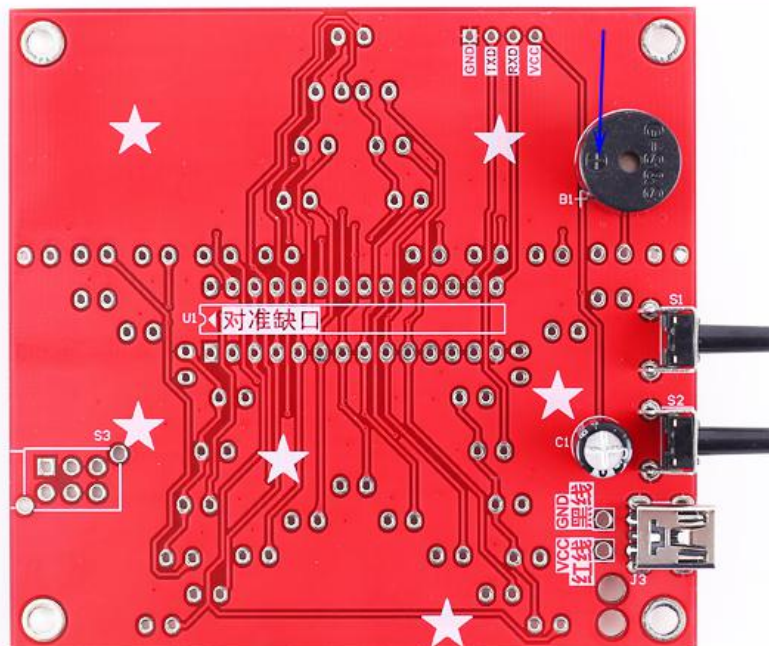
Note: Long pin is the positive pole.



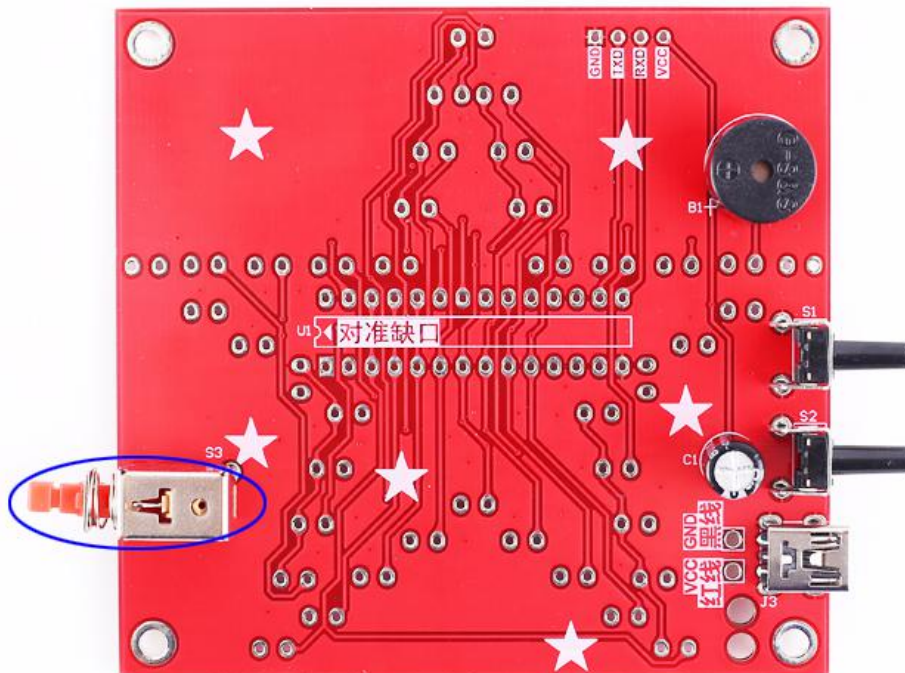
Step 3: Install 2pcs black button at S1 and S2.



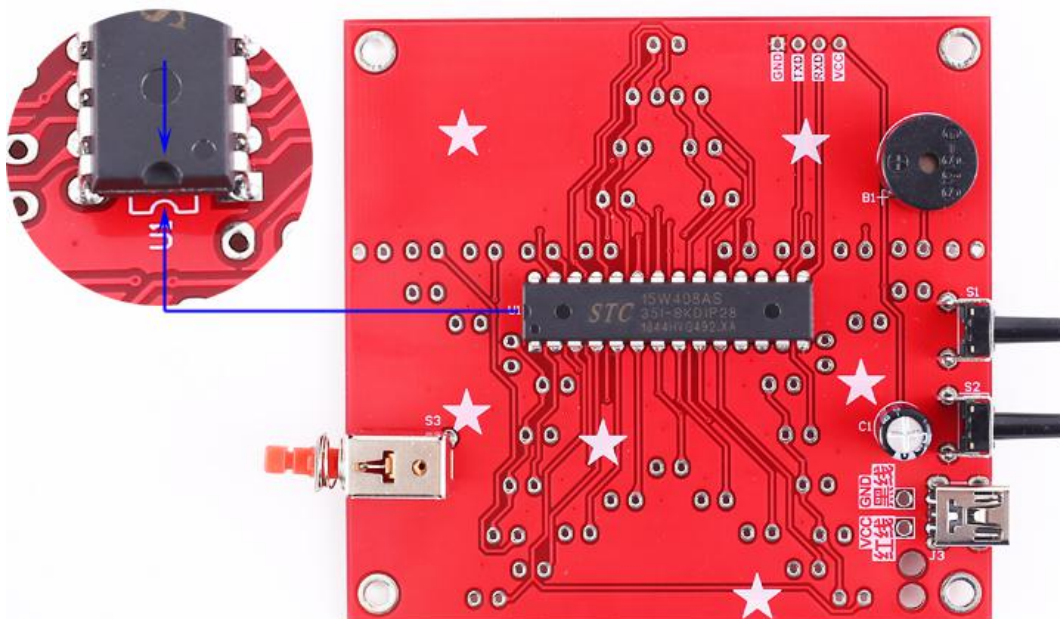
Step 4: Install 1pcs Passive Buzzer at B1. Pay attention to distinguish between positive and negative. There is a mark + on buzzer means the corresponding pin is positive pole.



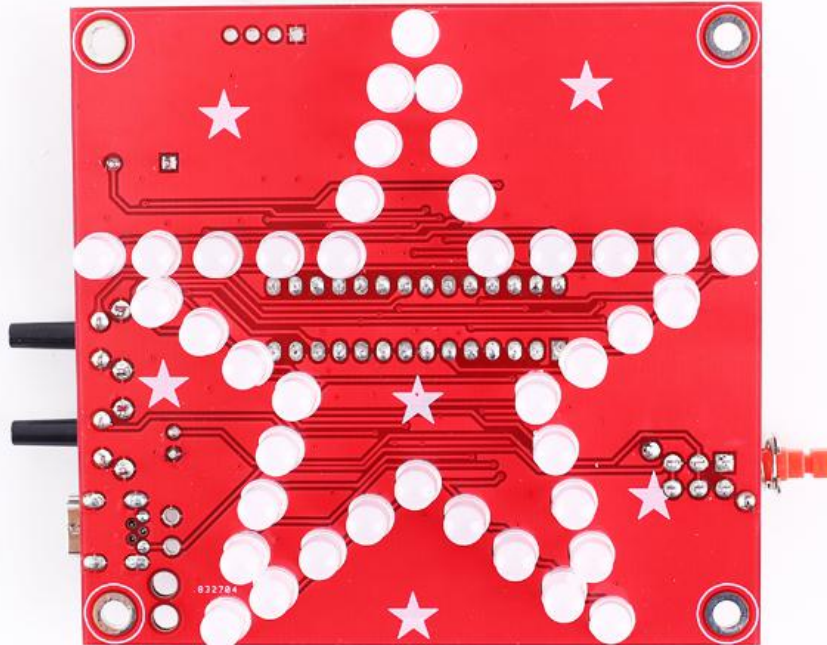
Step 5: Install 1pcs red button at S3.



Step 6: Install 1pcs DIP-28 IC Socket and 1pcs DIP-28 STC15W408AS at U1. Must not be installed reverse, otherwise it will not work properly. User can also not install IC Socket.



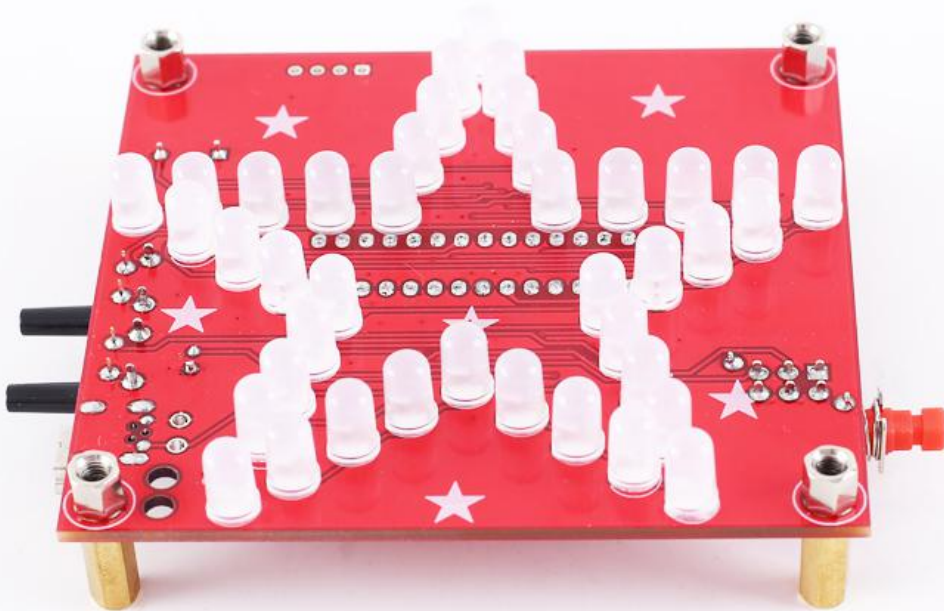
Step 7: Install 5mm RGB LED on the other side of PCB. Pay attention to distinguish between positive and negative.



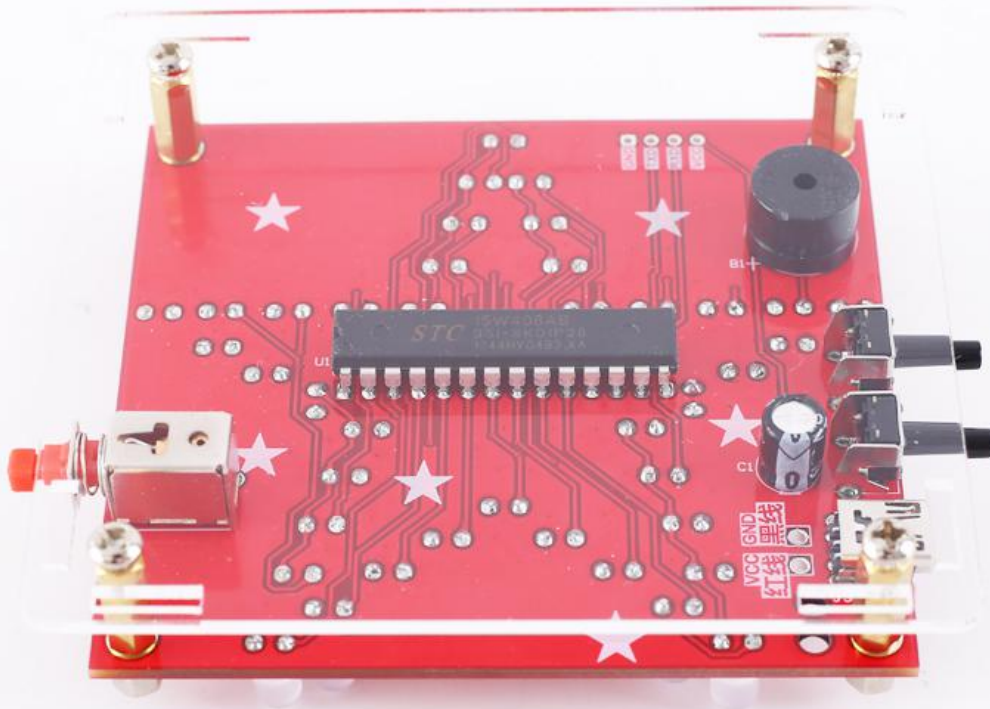
Step 8: Install the acrylic case. User can also not install. Tear off the protective film on the acrylic surface.



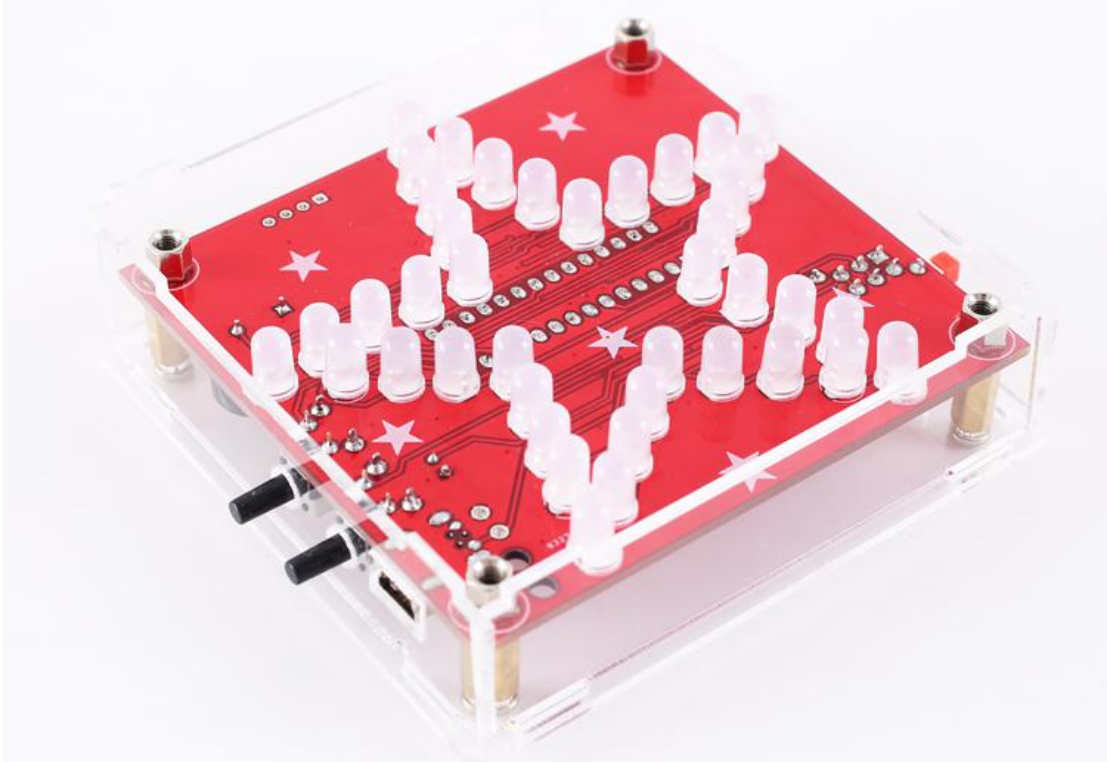
Step 9: Mounting screws and copper posts.



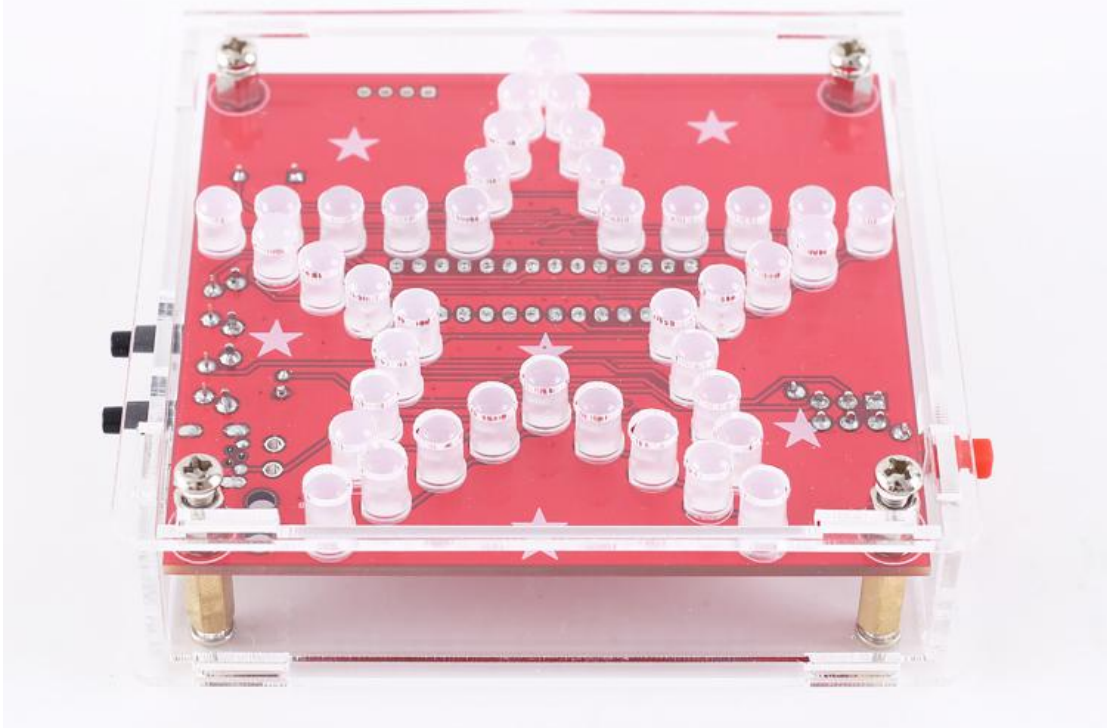
Step 10: Fixed base acrylic.



Step 11: Place the surrounding acrylic.



Step 12: Fixed upper acrylic.



Step 13: Turn on the power and enjoy the effect.

