

Tools you need.

- ①Iron (30W)
- ②Solder wire
- ③Multimeter
- ④Tweezers
- ⑤Wire cutters

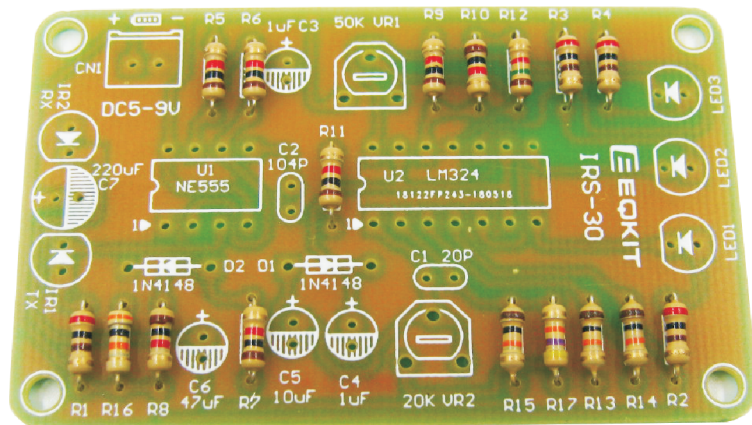
Precautions:

- ①Check part values & quantities against part list
- ②Always meter resistor values before soldering
- ③Understand all part polarities and orientations

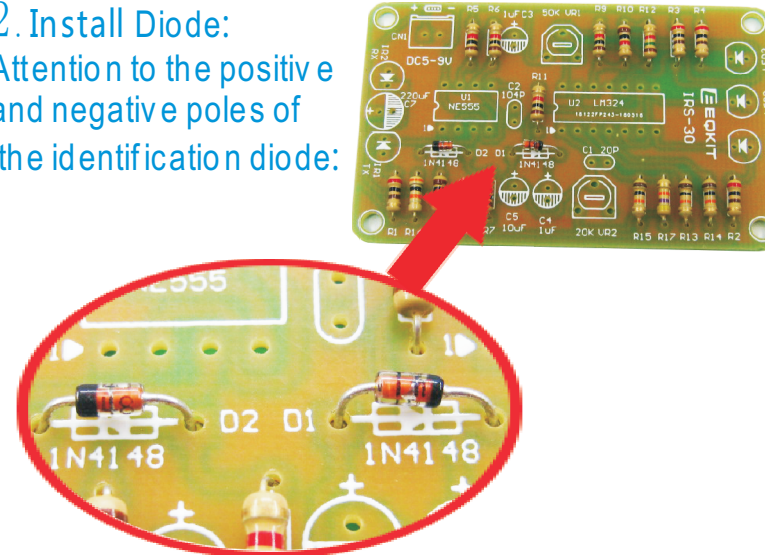
IRS-30 Infrared reversing radar kit instructions

Rev. 1.0 2018.06.02 Produced by YiQi

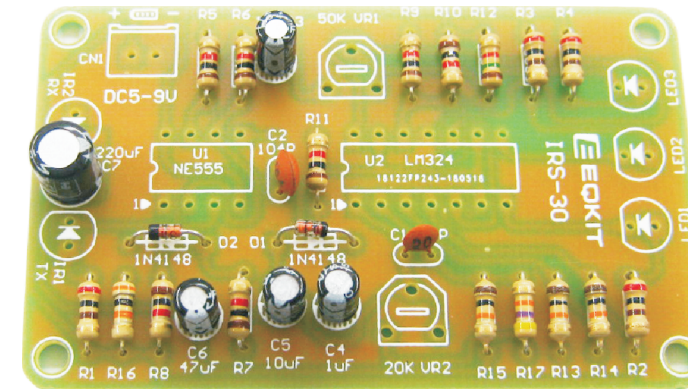
1. Install RES: Refer to the circuit board identification or shipping list, and install the resistor on the circuit board.



2. Install Diode: Attention to the positive and negative poles of the identification diode:



3. Install Ceramic capacitor and electrolytic capacitor: Refer to the circuit board identification or shipping list, and install the capacitor on the circuit board. The long foot of the electrolytic capacitor is the positive pole.

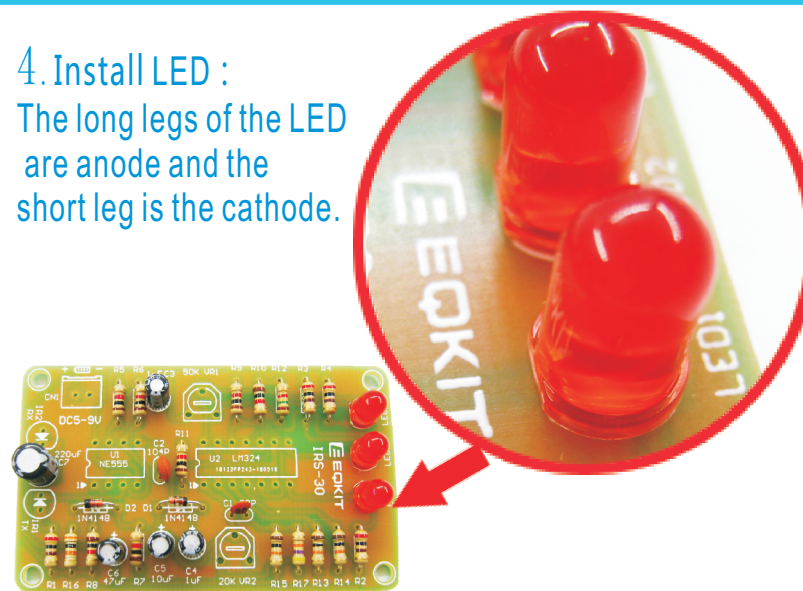


Notice:

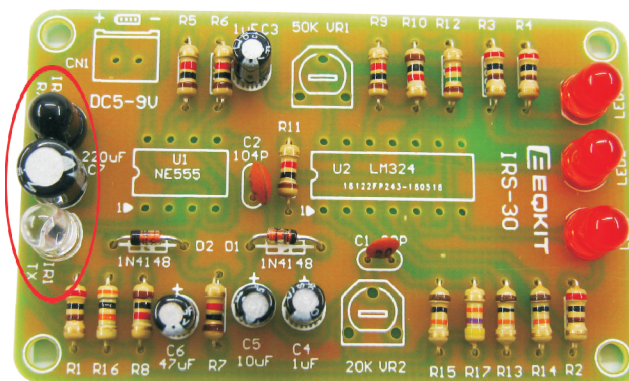
LED, receiving diode, emitting diode, electrolytic capacitor. Long feet are positive, short feet are negative, long feet are elded on electricity On the square weld plate of the road plate.



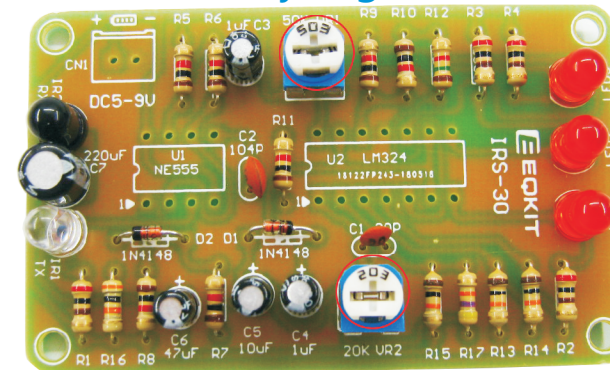
4. Install LED: The long legs of the LED are anode and the short leg is the cathode.



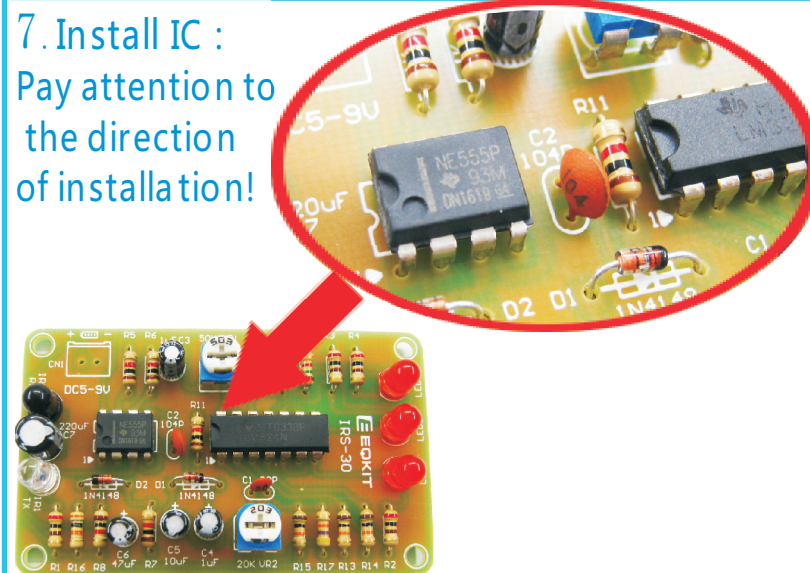
5. Install Infrared emitter and receiving tube: IR1(TX) is a transparent launching tube. IR2(RX) is a black receiver. The installation method is the same as LED.



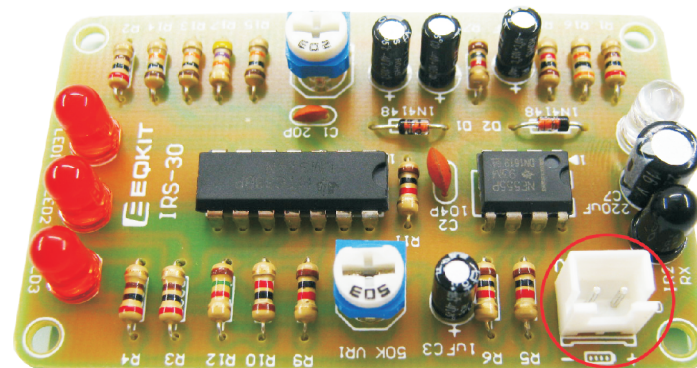
6. Install Adjustable resistor: VR1=50K (503) .VR2=20K (203) VR1 is the adjustment distance. VR2 is sensitivity regulation.



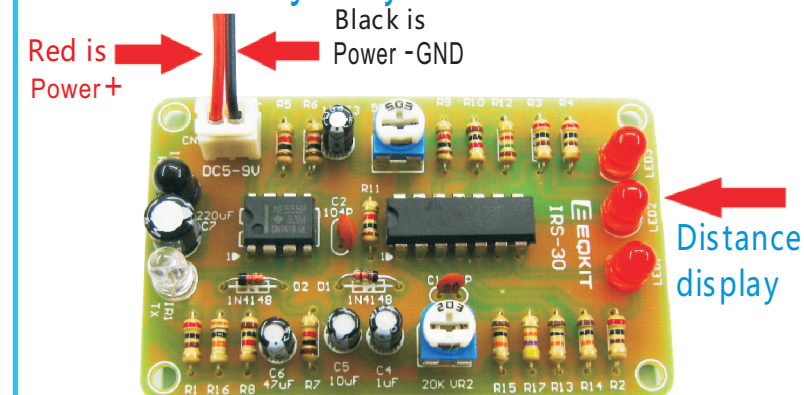
7. Install IC: Pay attention to the direction of installation!



8. Install the power input port Cn1:

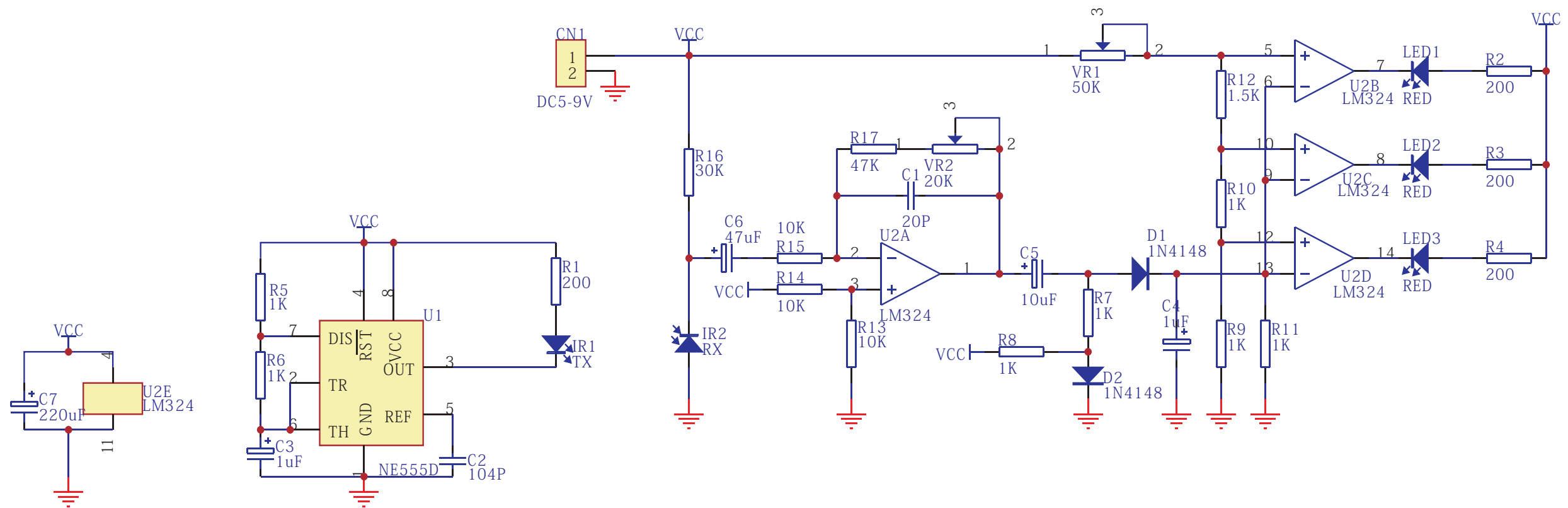


9. Test: power supply DC5-9V, proposal 5V. VR1 is the adjustment distance. VR2 is sensitivity regulation. VR2 does not adjust by default.



IRS-30 Infrared reversing radar component list

NO.	Name	Parameter	QTY
R1~R4	RES	200R	4
R5~R11	RES	1K	7
R12	RES	1.5K	1
R13, R14, R15	RES	10K	3
R16	RES	30K	1
R17	RES	47K	1
C1	CAP	20P	1
C2	CAP	104P	1
C3, C4	E-CAP	1uF	2
C5	E-CAP	10uF	1
C6	E-CAP	47uF	1
C7	E-CAP	220uF	1
D1, D2	Diode	1N4148	2
LED1~LED3	LED	5mmRed	3
IR1	TX-LED	5mmWhite	1
IR2	RX-LED	5mmBlack	1
VR2	ADJ-RES	20K	1
VR1	ADJ-RES	50K	1
U1	IC	NE555	1
U2	IC	LM324	1
CN1	Socket	2P	1
CN1	Wireway	15cm	1
—	PCB	IRS-30	1



Title		
Size B	Number	Revision
Date:	2-Jun-2018	Sheet of
File:	E:\longyong.ddb	Drawn By: