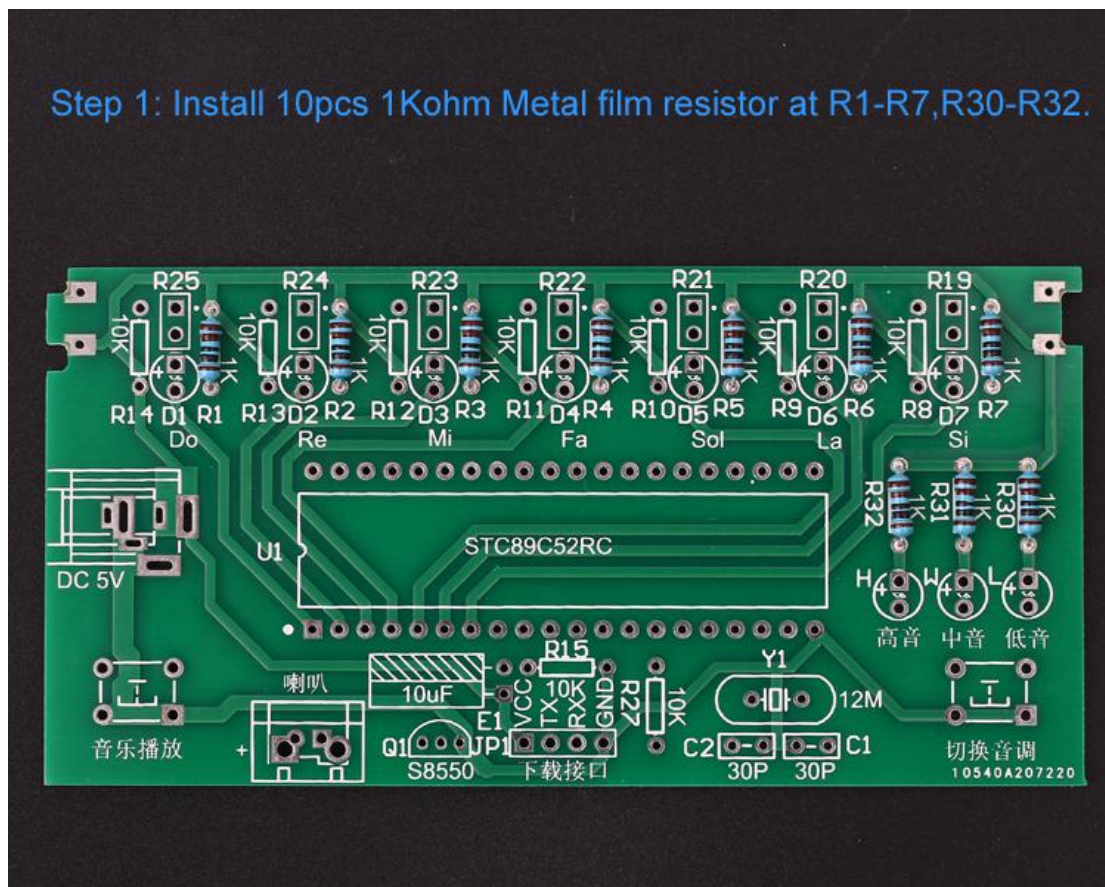


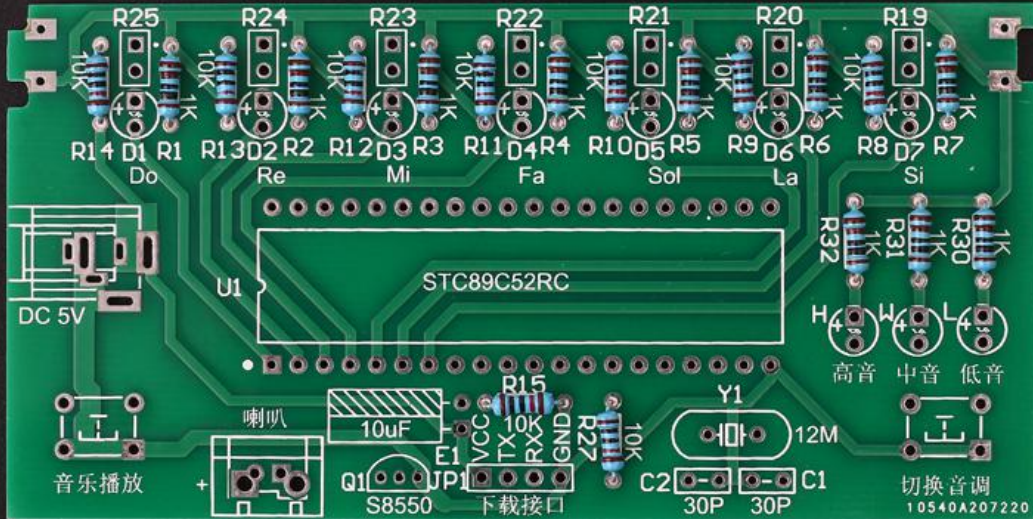
## 1. Installation Steps:

- 1>.Step 1: Install 10pcs 1Kohm Metal film resistor at R1-R7,R30-R32.
- 2>.Step 2: Install 9pcs 10Kohm Metal film resistor at R8-R15,R27.
- 3>.Step 3: Install 2pcs 30pF Ceramic capacitor at C1-C2. 1pcs 12MHz Crystal oscillator at Y1 and 1pcs 47uF 16V Electrolytic capacitor at E1.Pay attention to the positive and negative poles of electrolytic capacitors and the longer pin is positive pole.
- 4>.Step 4: Install 7pcs 3mm white LED at D1-D7 and 3pcs 3mm red LED at H/M/L.Pay attention to the positive and negative poles of LED and the longer pin is positive pole.
- 5>.Step 5: Install 1pcs S8550 TO-92 Transistor at Q1 and 1pcs DIP-40 IC socket at U1 and Pay attention to the installation direction.
- 6>.Step 6: Put a suitable length of heat shrinkable tube on the photosensitive sensor.
- 7>.Step 7: Install 7pcs photosensitive sensor at R17-R25.
- 8>.Step 8: Install 2pcs black button and 1pcs white 2P socket and 1pcs DC005 power supply socket and 1pcs 4Pin Male pin.
- 9>.Step 9: Install laser head.Pay attention to the positive and negative poles.
- 10>.Step 10: Install 7pcs laser head.It is recommended to fix the laser head with glue.
- 11>.Step 11: Mounting brackets.
- 12>.Step 12: Connect speaker and IC.Pay attention to the installation direction.

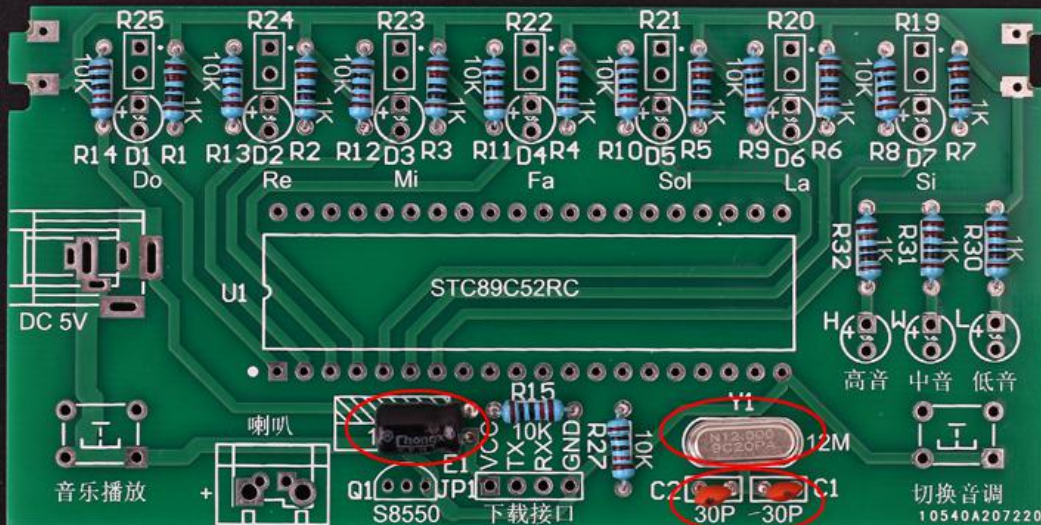
## 2. Install shown steps:



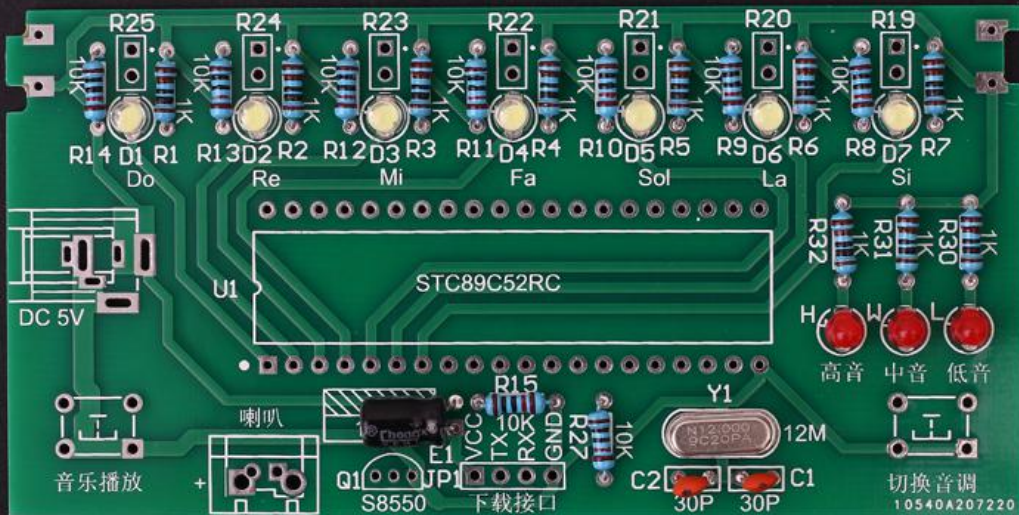
Step 2: Install 9pcs 10Kohm Metal film resistor at R8-R15,R27.



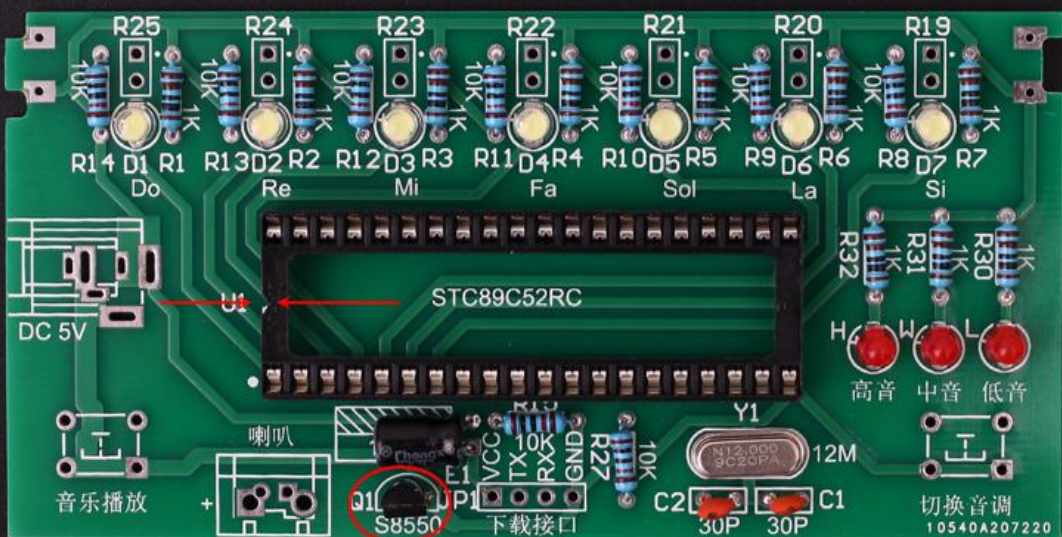
Step 3: Install 2pcs 30pF Ceramic capacitor at C1-C2.  
 1pcs 12MHz Crystal oscillator at Y1 and  
 1pcs 47uF 16V Electrolytic capacitor at E1.  
 Pay attention to the positive and negative poles of electrolytic capacitors and the longer pin is positive pole.



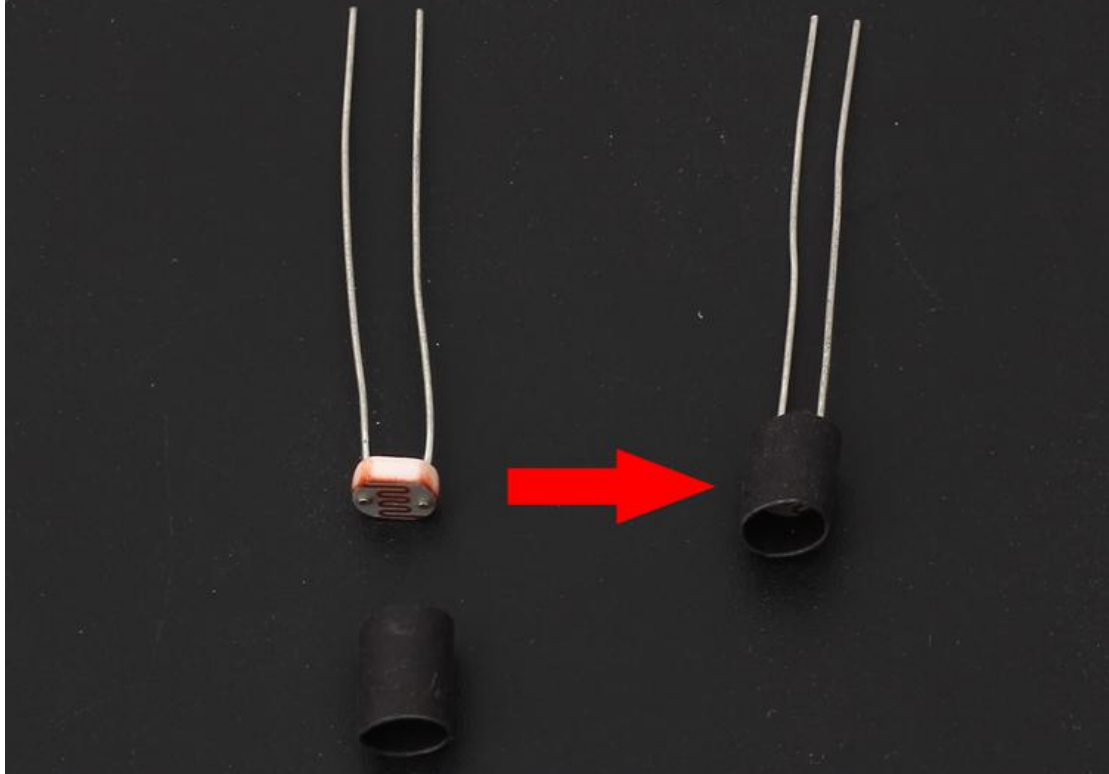
Step 4: Install 7pcs 3mm white LED at D1-D7 and 3pcs 3mm red LED at H/M/L.  
Pay attention to the positive and negative poles of LED and the longer pin is positive pole.



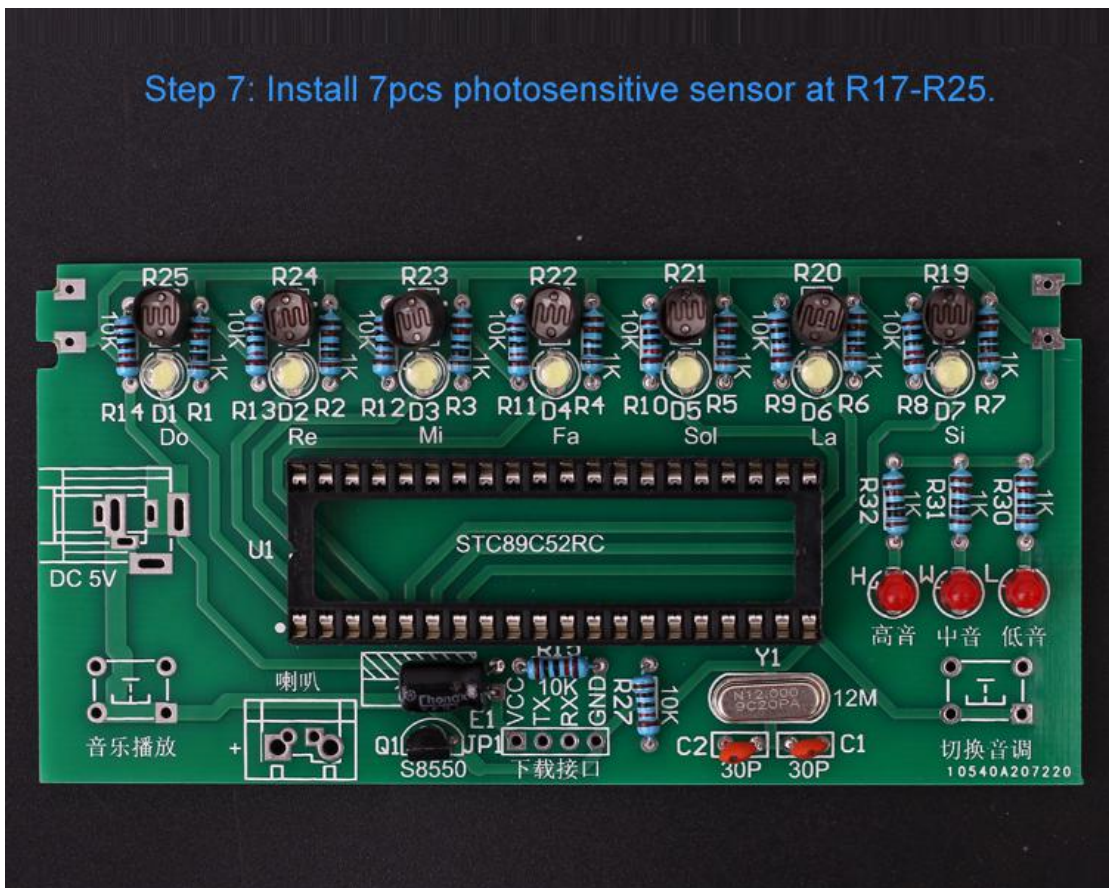
Step 5: Install 1pcs S8550 TO-92 Transistor at Q1 and 1pcs DIP-40 IC socket at U1 and Pay attention to the installation direction.



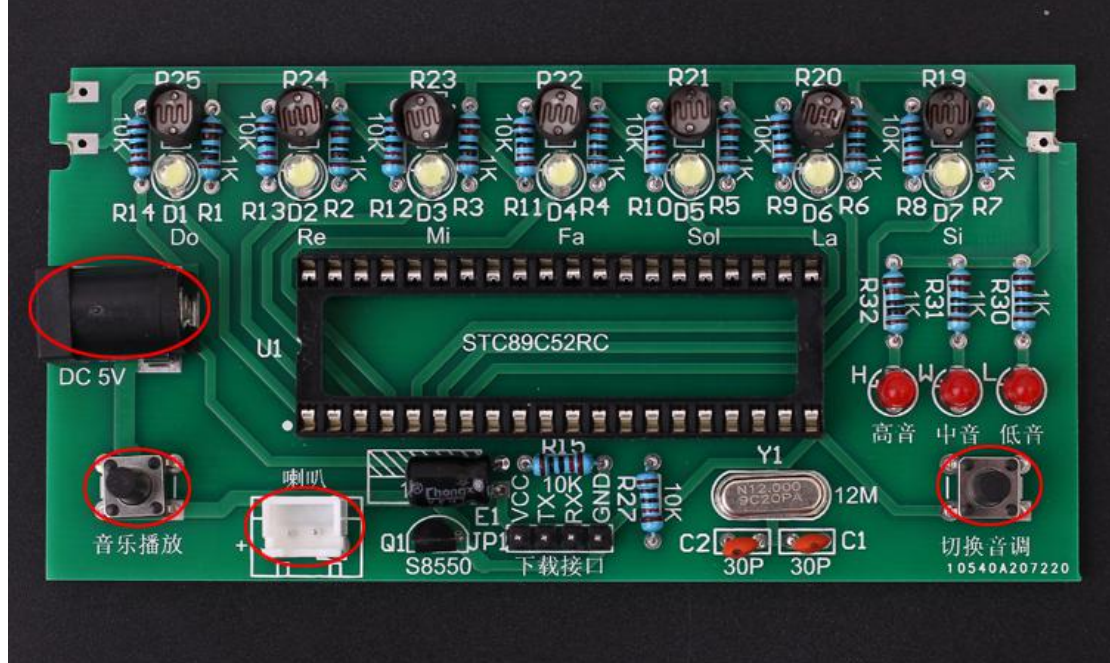
Step 6: Put a suitable length of heat shrinkable tube on the photosensitive sensor.



Step 7: Install 7pcs photosensitive sensor at R17-R25.



Step 8: Install 2pcs black button and 1pcs white 2P socket and 1pcs DC005 power supply socket and 1pcs 4Pin Male pin.



Step 9: Install laser head. Pay attention to the positive and negative poles.

